

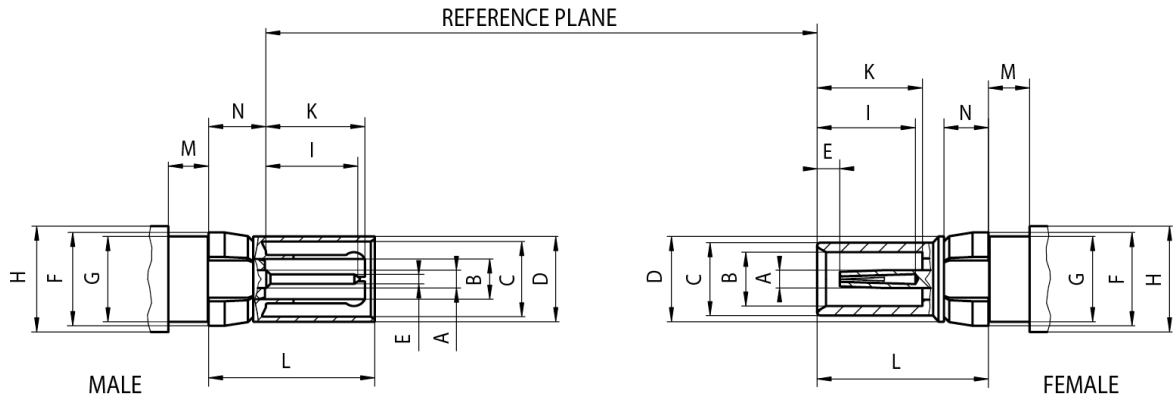
# Technical Data

# Rosenberger

45

Insert Coax 1.0-2.3  
DIN 41626-T2 (50 Ω)

45-000-000\_TD



	Male		Female	
	min.	max.	min.	max.
A	Ø 1.00 nom.		Ø 1.00 nom. <sup>1) 2)</sup>	
B	–	Ø 2.30 <sup>1) 2)</sup>	Ø 3.00	Ø 3.06
C	Ø 4.20	Ø 4.275	Ø 4.03	Ø 4.15
D	Ø 4.66	Ø 4.72	Ø 4.72	Ø 4.75
E	Ø 0.475	Ø 0.52	1.15	1.45
F	–	Ø 5.25	–	Ø 5.25
G	Ø 4.76	Ø 4.79	Ø 4.76	Ø 4.79
H	–	Ø 6.00	–	Ø 6.00 <sup>3)</sup>
I	5.20	5.50	5.50	–
K	5.40	5.70	5.80	5.90
L	9.25	9.35	9.50	9.60
M	2.22	2.40	2.22	2.40
N	3.05	3.20	2.45	2.50

Dimensions in mm

<sup>1)</sup> Contact diameter refers to 50 Ω

<sup>2)</sup> Resilient, dimension to meet electrical and mechanical requirements

<sup>3)</sup> Square shape optional

## Interface

According to

DIN 41626-T2, BS 9525 F0011

Dieses Dokument ist urheberrechtlich geschützt • This document is protected by copyright • Rosenberger Hochfrequenztechnik GmbH & Co. KG

RFB00035

Draft	Date	Approved	Date	Rev.	Engineering Change Number	Name	Date
Chr. Janßen	05.02.2019	Chr. Janßen	05.02.2019	a00	19-s083	J_Krautenbac	12.03.2019
Rosenberger Hochfrequenztechnik GmbH & Co. KG P.O. Box 1260 D-84526 Tittmoning Germany www.rosenberger.com					Tel. : +49 8684 18-0 Email : info@rosenberger.com		Page 1 / 2

## Technical Data

# Rosenberger

45

Insert Coax 1.0-2.3  
DIN 41626-T2 (50 Ω)

45-000-000\_TD

### Electrical data

Impedance	50 Ω
Frequency range	DC to 2 GHz
Return loss (cable connector straight)	≥ 20 dB (typ.)
Insertion loss	≤ 0.1 x √f [GHz] dB
Insulation resistance	≥ 0.2 GΩ
Center contact resistance	≤ 10 mΩ
Outer contact resistance	≤ 3 mΩ
Test voltage	750 V rms
Working voltage	250 V rms
RF leakage - Interface	≥ 80 dB @ DC to 0.5 GHz ≥ 65 dB @ 0.5 GHz to 1.5 GHz

### Mechanical data

Mating cycles	≥ 500
Connector captivation in plastic	≥ 52 N
Center contact captivation	axial: ≥ 10 N
Engagement force	≤ 10 N
Disengagement force	≤ 10 N

### Environmental data

Temperature range	-55 °C to +125 °C
Dry heat	IEC 60068-2-2
Damp heat	IEC 60068-2-78
Climatic category	IEC 60068-2-1 55/125/21
Max. soldering temperature (PCB connectors)	IEC 61760-1, +260 °C for 10 sec.

### Materials

Connector parts	Material	Plating
Spring loaded contact parts	CuBe	Au
Center contact	CuZn	Au
Outer contact	CuZn	Au
Crimping ferrule	Cu	Au
Clip	CuBe	Ni
Dielectric	PTFE	

While the information (including technical data) has been carefully compiled to the best of our knowledge at the time of publication, the information is provided "AS IS" without warranties of any kind either express or implied. Apart from this, no statement herein shall be construed as recommendation to infringe existing patents. Individual values may deviate depending upon circumstances including but not limited to application, design, type of cable, assembly and workmanship. Furthermore, we reserve the right to change the design and technical specification of our products when deemed necessary.

Draft	Date	Approved	Date	Rev.	Engineering Change Number	Name	Date
Chr. Janßen	05.02.2019	Chr. Janßen	05.02.2019	a00	19-s083	J_Krautenbac	12.03.2019
Rosenberger Hochfrequenztechnik GmbH & Co. KG P.O. Box 1260 D-84526 Tittmoning Germany www.rosenberger.com					Tel. : +49 8684 18-0 Email : info@rosenberger.com		Page 2 / 2